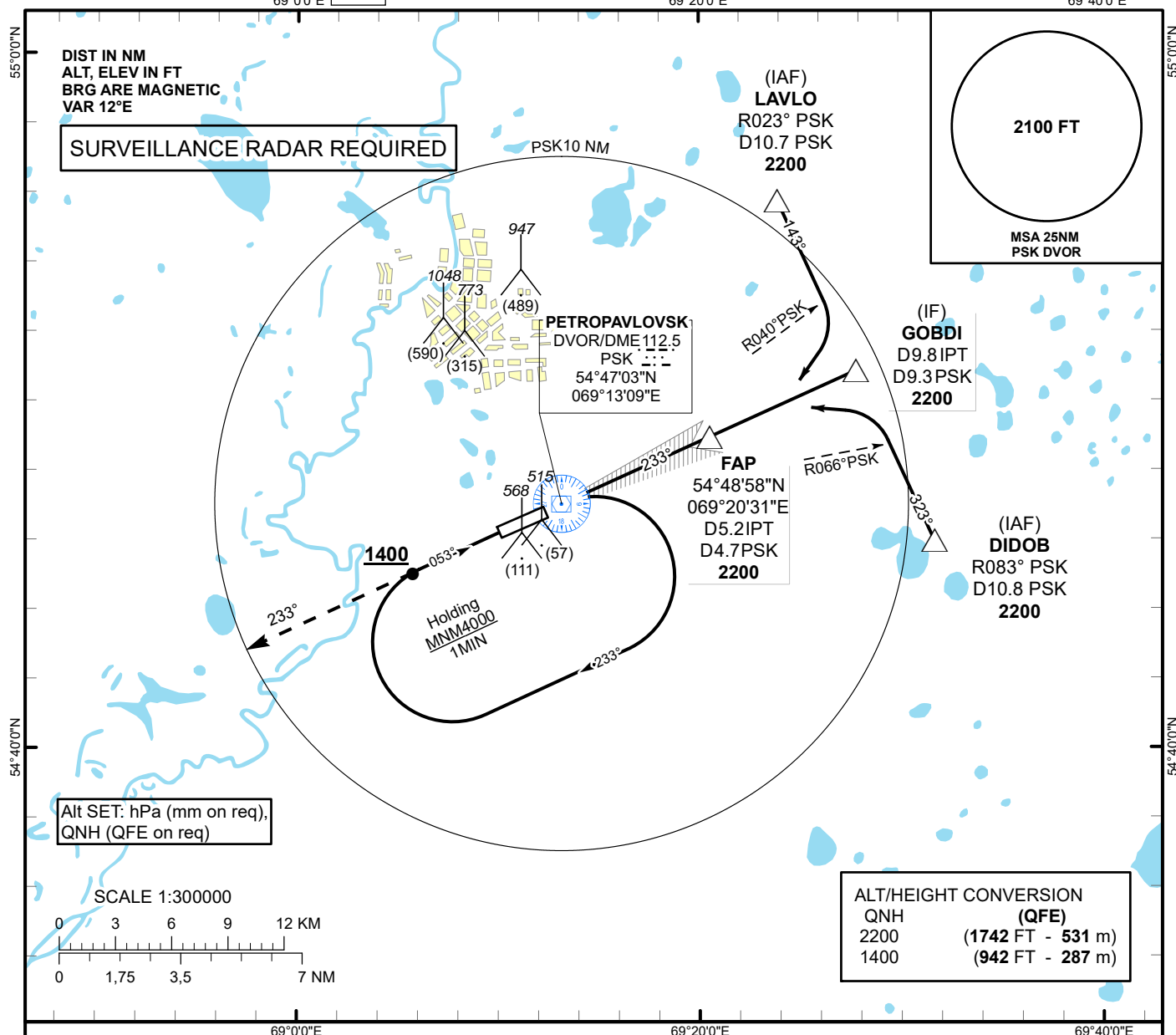


INSTRUMENT
APPROACH
CHART - ICAOILS
LLZ 108.3
IPT
GP 334.1
CH 20XAERODROME ELEV **458 FT**
HEIGHTS RELATED TO
THR RWY 23 - ELEV **458 FT**PETROPAVLOVSK TOWER 123.7
PETROPAVLOVSK ATIS (EN) 127.4
PETROPAVLOVSK ATIS (RU) 118.3PETROPAVLOVSK
ILS/DME Y
RWY 23

TRANSITION ALT 10000 FT

MISSED APPROACH
Climb on track 233° to 2200 ft.
After passing 1400 ft radar
vectoring will be provided.ILS RDH 54
ELEV 458
THR RWY 23DVOR/DME
PSK

GP 3.0°

FAP
D 5.2 IPT
D 4.7 PSK**2200****IF**
GOBDI
D 9.8 IPT
D 9.3 PSK

Aircraft Category		A	B	C	D	DIST to THR DME IPT	NM	1	2	3	4	5	5.2
Straight-in Approach OCA/H						DME PSK	NM	0.5	1.5	2.5	3.5	4.5	4.7
	CAT I	658(200)	658(200)	668(210)	678(220)	ALTITUDE	FT	831	1152	1475	1799	2126	2200
						HIGHT	FT	373	694	1017	1341	1668	1742
DME IPT ZERO RANGED TO THR RWY 23													
Aerodrome Operating Minima DH ft x RVR(CMV)	CAT I					GS	Kt	80	100	120	140	160	180
						Desc.Rate(5.2%)	ft/min	420	530	640	740	850	960

CHANGE: Revised.

PETROPAVLOVSK
ILS/DME Y

AERONAUTICAL DATA TABULATION

ILS approach to RWY23 from LAVLO, GOBDI, DIDOB	
Fix/point	Coordinates
PSK DVOR/DME	54°47'02.9" N 069°13'08.7" E
IPT D5.2 PSK D4.7 (FAP)	54°48'58.3"N 069°20'30.9"E
GOBDI (IF) IPT D9.8 PSK D9.3	54°50'52.3" N 069°27'49.3" E
LAVLO (IAF) R023° PSK D10.7	54°55'46.2" N 069°23'54.9" E
DIDOB (IAF) R083° PSK D10.8	54°45'58.2" N 069°31'42.9" E
THR RWY23	54°46'50.42" N 069°12'21.41" E
IPT LLZ	54°46'00.3" N 069°09'11.0" E